


GTR™ -X® 300

High performance and high value




 Eclipse Black and Deep Marsala

Rotax® 1630 ACE™ - 300

GTI® Hull

Extended Variable Trim System (VTS™)

CAPACITY

Rider Capacity	
Weight Capacity	600 lb / 273 kg
Fuel Capacity	18.5 US gal / 70 L
Glove Box	2.3 US gal / 8.8 L
Front Bin	38 US gal / 144 L
Storage Capacity Total	40.3 US gal / 152.8 L

DIMENSIONS

Length (bumper to bumper)	130.7" / 332 cm
Width	49.2" / 125 cm
Height	43.4" / 110 cm

HULL

Type	GTI Hull
Material	Polytec™

FEATURES

- Seat strap
- iBR® - Intelligent Brake & Reverse*
- RF D.E.S.S.™ key
- Wide-angle mirrors
- Round handle grips
- Footwell carpets
- Large swim platform
- Tow hook

ROTAX ENGINE 1630 ACE - 300

Horsepower	300 hp
Intake System	Supercharged with external intercooler
Displacement	1,630 cc
Cooling	Closed-Loop Cooling System (CLCS)
Reverse System	Electronic iBR
Fuel Type	91 octane (premium gasoline)
Throttle System	iTC™ (Intelligent Throttle Control)
Exhaust System	D-Sea-Bel™ system

GAUGE

Type of Gauge	7.6 in. digital display 7.8 in. color LCD display (with Tech Package)
Main Functions	<ul style="list-style-type: none"> • BRP Connect (opt.) • Music (opt.) • Navigation (opt.) • Bluetooth* connectivity (opt.) • Fuel consumption (opt.) • Speedometer • RPM • Clock • Extended VTS • Fuel autonomy • Top speed and average speed • Vehicle hours

iTC System - Mode	Eco*, Sport, Speed Regulator, Slow Speed & Launch Control Mode
-------------------	--

WEIGHT

Dry Weight	794 lb / 360 kg 813 lb / 369 kg (with sound system)
------------	--

WARRANTY


BRP limited warranty covers the watercraft for one year.

*Electronic brake, neutral and reverse.

Key Features

- Large front storage
- Watertight phone compartment
- LinQ® attachment system
- Double-angled footwell wedges
- Stainless polished impeller
- Low-rise racing handlebar
- Ergolock™ two-piece racing seat
- **Tech Package (optional):**
 - BRP Audio - Premium System
 - Full-color 7.8 in. wide display
 - USB port



 Eclipse Black and Deep Marsala

Feature Highlights



Rotax 1630 ACE - 300 Engine
The powerful Rotax® 1630 ACE™ - 300 levels up your performance to your liking by delivering high efficiency and a world-class acceleration.



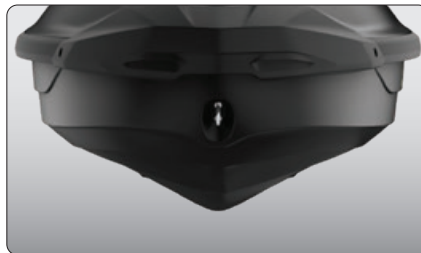
Ergolock Two-Piece Racing Seat
Tacky surface and back support enhance grip during performance riding.



Low-Rise Handlebars
Creates a more streamlined, race-oriented riding position.



Tech Package (optional)
Levels up entertainment and functionality on the water. It includes a factory-installed, truly waterproof Bluetooth® audio system, a 7.8" color display and a USB port.



GTI Hull
This moderate V-shaped hull guarantees a stable, enjoyable ride in variable water conditions. Confident, predictable handling but incredibly playful when you want it to be.



Double-Angled Footwell Wedges
Lined with premium carpets to provide superior foot grip.